



Team Visitors Guide

Boston FIRST Robotics
Regional Competition
7-9 April 2011

Boston University - Agganis Arena
925 Commonwealth Avenue, Boston, MA

Visit our website at: www.BostonFIRST.org

Table of Contents

1	Welcome to the Boston <i>FIRST</i> Robotics Competition	4
1.1	Greetings from the Boston Regional Planners	4
2	Welcome to Boston.....	4
2.1	Historic Boston	4
2.2	Boston University	4
2.3	Agganis Arena at Boston University	4
3	Getting Around.....	6
3.1	Traveling Around Boston.....	6
3.2	Directions to the Competition Arena	6
3.3	Driving Directions.....	8
3.3.1	From the North.....	8
3.3.2	From the South.....	8
3.3.3	From the West.....	8
3.4	Using the MBTA Subway, aka “ The T”	8
3.4.1	Via the Green Line	9
3.4.2	Via the Red Line.....	9
3.4.3	Via the Blue Line.....	10
3.4.4	Via the Orange Line	10
3.5	Arriving to Boston by Train or Bus.....	10
3.6	Arriving to Boston via Logan Airport	10
4	Parking at Agganis Arena.....	11
4.1	Loading Information:.....	11
5	Event Information	12
5.1	General Event Information.....	12
5.1.1	Consent Forms	12
5.1.2	Event Rules	12
5.1.3	Seating in the Arena	13
5.2	In Case of Emergency	13
5.3	Additional Activities at the Arena.....	13
5.4	The Pits.....	13
5.5	Wireless Internet and Power.....	13

5.6	Machine Shop Information/Rules	13
5.7	Event Schedule	14
5.7.1	Thursday.....	14
5.7.2	Friday.....	14
5.7.3	Saturday	14
5.8	Team Social	15
5.9	Meals and Accommodations	15
5.9.1	Breakfast and Lunch	15
5.9.2	Hotels	15
5.10	Webcasting and Video Database System	15
6	Emergency Information.....	16
6.1	Area Hospitals	16
6.2	Dental	17
6.3	Optical	17
6.4	Pharmacies	18
7	Retail Resources near Agganis Arena	19
7.1	Office Supplies/Copies	19
7.2	Electronics/Computer Stores	19
7.3	Hardware/Home Improvement Stores	19
8	What To Do If Your Team Has Some Spare Time	20
8.1	On the Boston University Campus	20
8.2	Shopping Areas in and Around Boston.....	20
8.3	Tourist Attractions.....	21
8.4	Movie Theatres	21
8.5	Boston Area Colleges and Universities.....	22
8.6	Other Massachusetts Tourist Resources	22
9	Any questions?	23

1 Welcome to the Boston *FIRST* Robotics Competition

1.1 Greetings from the Boston Regional Planners

Welcome to the city of inventors! Boston is home to some of history's greatest thinkers, and innovators. These people have helped changed lives and the world around us. The computer, telephone, Morse code, drinkable tap water, mass produced radar, the Internet and SO much more! This Historic city hosts an incredible concentration of America's greatest universities and has developed into one of the largest technology hubs in our nation. Boston is full of history, but the people of Boston are inspired to create better future!

The Boston *FIRST* Regional Planning Committee invites you to join us in this 'inventive' journey. Good luck to all of our participating teams from near and far! Please use this guide as a reference for your competition and your visit to the Boston area. If you have any other questions, please reach out to us using the contact information listed at the end of this document!

We welcome you to the Boston *FIRST* Robotics Regional!

2 Welcome to Boston

2.1 Historic Boston

Boston was first incorporated as a town in 1630 and then as a city in 1822. It is one of America's oldest cities with a rich economic and social history. What began as a homesteading community eventually evolved into a center for social and political change. Boston has since become the economic and cultural hub of New England.

As the region's hub, Boston is home to nearly 590,000 residents, many institutions of higher education, some of the world's finest inpatient hospitals, and numerous cultural and professional sports organizations. Boston-based jobs, primarily within the finance, health care, educational, and service areas, numbered nearly 660,000 in 2002. Millions of people visit Boston to take in its historic neighborhoods, attend cultural events, sporting events, and conduct business.

For more information on the history of Boston and the surrounding area, please visit the City of Boston website: <http://www.cityofboston.gov>

2.2 Boston University

Boston University, the host of the *FIRST* Robotics Competition, is an independent, coeducational, and nonsectarian University. It is an internationally recognized institution of higher education and research located along the banks of the Charles River and adjacent to the historic Back Bay district of Boston. With more than 30,000 students from all 50 states and 140 countries, it is the fourth largest independent university in the United States. It spans multiple city blocks along Commonwealth Ave between Babcock and Kenmore Streets. For more information, visit <http://www.bu.edu>.

2.3 Agganis Arena at Boston University

Agganis Arena at Boston University is located within Boston University's new \$225 million John Hancock Student Village—a 10-acre hub of activity designed to be the thriving center of student life and athletics.

Agganis Arena is a state-of-the-art, multipurpose sports and entertainment center. A 290,000-square-foot premier venue with 6,300 seats for hockey and ice shows, the Arena is expandable to over 7,200 seats for concerts, sporting events, and family shows.

In addition to exciting hockey action, Agganis Arena hosts Boston University events, concerts, family shows, trade shows and conferences throughout the year. We look forward to welcoming you to a beautiful, clean, comfortable, safe, and exciting environment.

The Agganis Arena is wheelchair accessible. The Arena fully complies and exceeds all requirements as set forth in the Americans with Disabilities Act. The handicap accessible drop-off location is located on the corner of Harry Agganis Way and Commonwealth Avenue. The Main Lobby Entrance is accessible to guests with disabilities as are all Arena entrances, hallways, and pathways.

A few more notes about the Boston FIRST Regional Competition at the Agganis Arena venue:

- Admission is free and there is more than enough space for family and friends!
- The arena is easily reached via the MBTA (Boston subway system) or by car from the Mass Pike.
- Limited paid parking is available in the arena garage. Carpooling is encouraged.
- Spectators will be afforded unobstructed views of the exciting live action on the playing field.
- The arena has plenty of room to get together with old friends and meet new ones.

Agganis Arena information provided by <http://www.agganisarena.com>

3 Getting Around

3.1 Traveling Around Boston

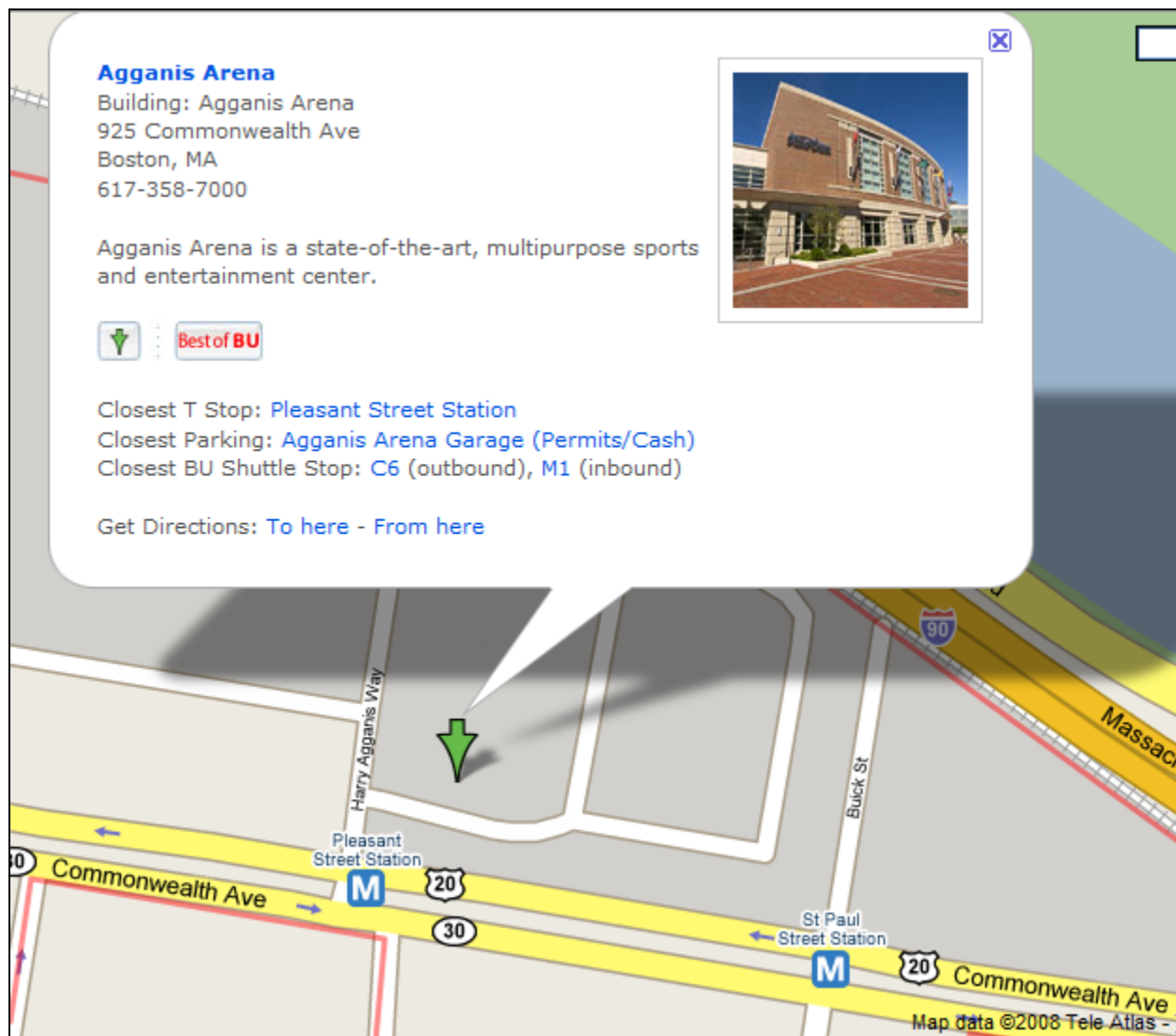
Boston is a walking city, so driving on Boston streets is often confusing as streets often change direction and are not well marked in some areas. Street parking is restricted to residents in many areas in Boston and the surrounding communities. We suggest that you consider the area's public transportation as you determine how to transport your team.

Caution!

On Friday allow ample extra time if traveling by auto. You don't want to be late to the competition! Morning inbound and afternoon outbound traffic can be very congested during the week on the surface roads and on the major highways. Travel time from Rte 95 to downtown Boston on Route 90 can take more than an hour in rush hour traffic. Route 93 traffic is also very slow during rush hour. Travelers can sit in stopped traffic for 15-30 minutes.

3.2 Directions to the Competition Arena

Agganis Arena is located at 925 Commonwealth Ave, Boston, MA. The map below shows the area around the competition arena.



Source 1: <http://www.bu.edu/maps/index.php?id=17>

Caution!

When planning the driving routes for a bus, truck or other high-clearance vehicle, avoid Storrow Drive and Memorial Drive as it can be as low as 9' in some places!
The Agganis Arena provides some great directions at their site:
<http://www.bu.edu/agganis/directions/bus-trucks.html>

3.3 Driving Directions

3.3.1 From the North

- Take I-93 or Route 1 South to Boston. Exit onto Storrow Drive.
- Continue on Storrow Drive to the Kenmore Square Exit.
- At the first set of lights, turn right onto Beacon Street (left exit).
- Bear right at the far end of Kenmore Square onto Commonwealth Avenue.
- Continue on Commonwealth Avenue to Agganis Arena (approximately 1 mile).
- Arrive at 925 Commonwealth Avenue
The last intersection is Buick St
If you reach Pleasant St, you've gone too far

3.3.2 From the South

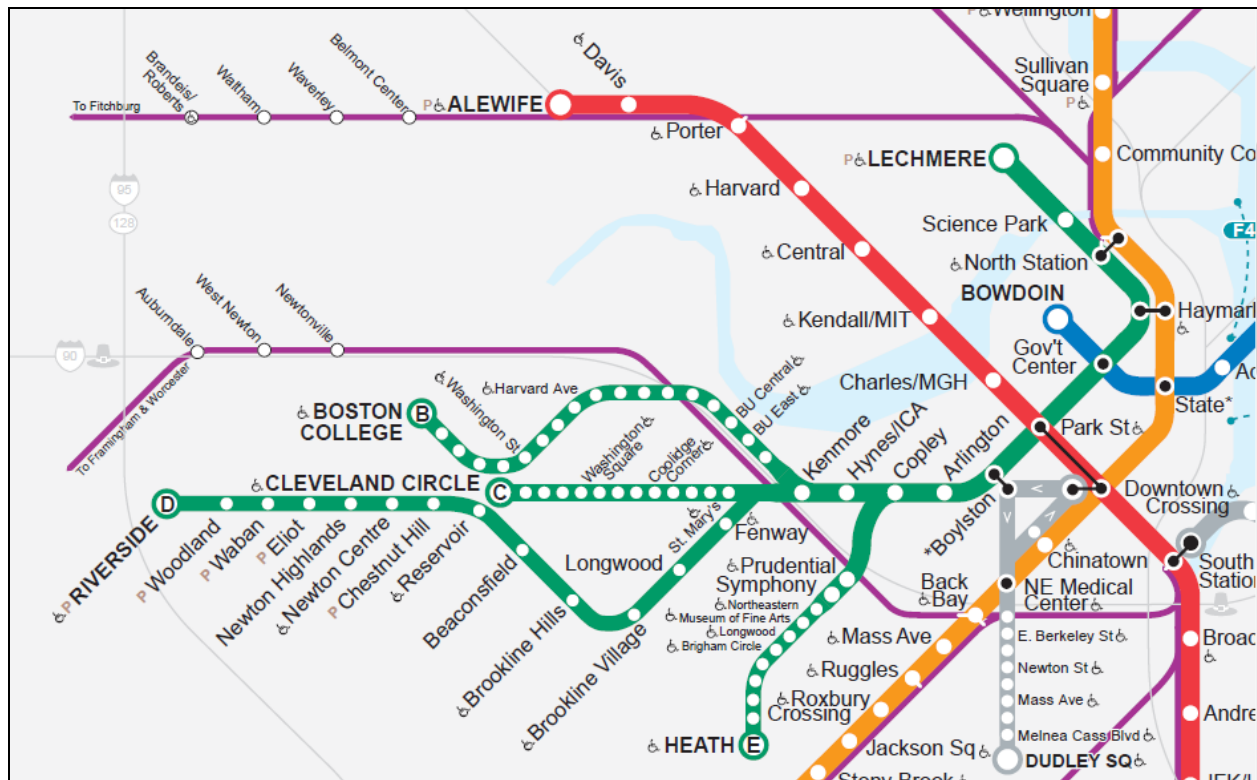
- Take I-93 Route 3 (Southeast Expressway) North to Boston. Exit onto Storrow Drive.
- Continue on Storrow Drive to the Kenmore Square Exit.
- At the first set of lights, turn right onto Beacon Street.
- Bear right at the far end of Kenmore Square onto Commonwealth Avenue.
- Continue on Commonwealth Avenue to Agganis Arena (approximately 1 mile).
- Arrive at 925 Commonwealth Avenue
The last intersection is Buick St
If you reach Pleasant St, you've gone too far

3.3.3 From the West

- Take the Massachusetts Turnpike (I-90) East. Take Exit 18 on the left (Brighton/Cambridge).
- Follow Signs to Cambridge. At the second set of lights, turn right.
- Continue on Storrow Drive to the Kenmore Square Exit.
- At the first set of lights, turn right onto Beacon Street.
- Bear right at the far end of Kenmore Square onto Commonwealth Avenue.
- Continue on Commonwealth Avenue to Agganis Arena (approximately 1 mile).
- Arrive at 925 Commonwealth Avenue
The last intersection is Buick St
If you reach Pleasant St, you've gone too far

3.4 Using the MBTA Subway, aka “The T”

The T is made up of 4 intersecting subway lines (Blue, Green, Orange and Red) and a rapid transit bus line (Silver). The MBTA Trip Planner (http://www.mbta.com/rider_tools/trip_planner/default.asp) is the easiest way to determine the exact route that you should take when riding the T but here are some tips.



Source 2: http://www.mbta.com/schedules_and_maps/subway/

- The Agganis Arena is located on the Boston College (B) branch of the Green line, a few stops west of the BU Central stop. The Green line has 4 branches which terminate at various points West of Boston and to the east at the Lechmere station in Cambridge.
- These 4 branches meet at various stations ranging from 1 to 2.5 miles east of the Arena making it easy to connect between them at these stations.
- The Red, Blue and Orange lines also connect to the Green line near downtown Boston, some 5 miles east of the Arena.
- The MBTA uses a stored value system called the CharlieTicket and CharlieCard. For more information: http://www.mbta.com/fares_and_passes/charlie/
- A one-way trip on the T costs \$2.00 if paying with cash or via CharlieTicket and \$1.70 if using a CharlieCard. If you would like to purchase CharlieCards in advance, the MBTA website provides this ability here: <http://commerce.mbta.com/program/?prog=stored>

3.4.1 Via the Green Line

- If starting at the Lechmere, Science Park, North Station, or Haymarket stations: Take any Green Line train to Government Center. Transfer to a Westbound "B" (Boston College) train.
- If starting on the "C" (Cleveland Circle) or "D" (Riverside) branches, take any train inbound to Kenmore Square. Transfer to the outbound platform and board a "B" (Boston College) train.
- If starting on the "E" (Heath Street) branch, take any train inbound to Arlington station. Transfer to the outbound platform and board a "B" (Boston College) train.
- Once on a "B" (Boston College) train, travel to either the St. Paul Street or Pleasant Street stops; both are approximately one block from the Arena and are located between the Packard's Corner and BU West stops.

3.4.2 Via the Red Line

- Take the Red Line inbound to Park Street.
- Once at Park Street, transfer to a Westbound Green Line "B" (Boston College) train.
- Once on a "B" (Boston College) train, travel to either the St. Paul Street or Pleasant Street stops; both are approximately one block from the Arena and are located between the Packard's Corner and BU West stops.

3.4.3 Via the Blue Line

- Take the Blue Line inbound to Government Center.
- Once at Government Center, transfer to a Westbound "B" (Boston College) train.
- Once on a "B" (Boston College) train, travel to either the St. Paul Street or Pleasant Street stops; both are approximately one block from the Arena and are located between the Packard's Corner and BU West stops.

3.4.4 Via the Orange Line

- Take the Orange Line inbound to Downtown Crossing.
- Once at Downtown Crossing, follow the underground concourse to the Park Street station on the Green Line and board a Westbound "B" (Boston College) train.
- Once on a "B" (Boston College) train, travel to either the St. Paul Street or Pleasant Street stops; both are approximately one block from the Arena and are located between the Packard's Corner and BU West stops.

3.5 Arriving to Boston by Train or Bus

Boston's South Station is located at the corner of Summer Street and Atlantic Ave. The station services Amtrak (<http://www.amtrak.com>), Greyhound (<http://www.greyhound.com>), Peter Pan Bus Lines (<http://www.peterpanbus.com>), the Boston area commuter trains, and the Red Line of the T.

To get to Agganis Arena from South Station board the Red Line to Park Street and follow directions listed in the ["Via the Red Line" section](#).

3.6 Arriving to Boston via Logan Airport

Boston Logan airport (Code: BOS) is the closest airport to the Agganis Arena.

There are a variety of transportation options from Logan Airport:

- The Massport shuttle is available in front of any Terminal. It travels to the Airport Subway station on the Blue Line and then follow the directions in the ["Via the Blue Line" section](#).
- The MBTA Silverline Bus is available in front of any Terminal. It travels to South Station on the Red Line where you can then follow the directions in the ["Via the Red Line" section](#).
- Taxis are available in front of any terminal. The cost of a taxi from the airport to the arena is about \$25.
- Shared van service from the airport to hotels can be arranged from Ace American Supershuttle 1-800-517-2281.

Additional information is available on the Massport Logan Airport site:

http://www.massport.com/logan/getti_typeo.html

4 Parking at Agganis Arena

There is limited parking at the arena, which includes Arena lots A (the Garage) and C2 (surface lot adjacent to loading dock) at a rate of \$10 a day. Below is a diagram showing the Arena entrances and parking lots:



4.1 Loading Information:

All teams should be dropped off in FRONT of the arena at 925 Commonwealth Ave. and team members that can, should enter through the front doors of the arena.

If your team vehicle's height is less than 6' 6":

Below the arena is an enclosed two level parking garage. The lower level, P2, has been reserved for the use of teams for their offloading into the arena on Thursday. Simply drive into the garage from the North side (Charles River Side), proceed ahead following the signs down one ramp to P2, and unload in front of the freight elevator where you can take your equipment up to the arena floor. If your vehicle leaves within the hour you will not be charged for parking. Otherwise you can park anywhere in the garage for \$10 for the day. Please NOTE: There is a height limit in the garage of 6' 6".

If your team vehicle's height is 6'6" or higher:

You may park on Commonwealth Avenue where the parking meters have been removed from service and move your equipment down the brick paved way on the EAST side of the arena between the Agganis Arena [925 Commonwealth Ave] and the Fitness and Recreation Center [915 Commonwealth Ave]. (This is on the opposite side of the arena from Harry Agganis Way.)

Near the rear corner of the Arena building there is a set of doors that lead to the freight elevator which can take you and your gear down one level to the arena floor. Police/security personnel, volunteers and signs will be present to direct you.

Caution!

Please do not use the Arena Loading Dock as it will be in use by the various event service providers.

If you use the Arena Loading Dock, you will be ticketed and possibly towed!

5 Event Information

5.1 General Event Information

5.1.1 Consent Forms

Caution

Teams cannot register on 7 April without a completed form for each team member attending the event, including adults traveling with the team. Persons under 18 years of age must have a parent or legal guardian's signature. Please contact your regional director if you need to acquire consent forms.

5.1.2 Event Rules

Please read the following restrictions and adhere to them in order to promote an orderly and exciting competition. As a group, we all should honor agreements with the venue and help promote the spirit of good partnership.

- **Please do not attempt to deliver or ship robots directly to the site.** Please consult FIRST's rules about shipping robots at <http://www.usfirst.org/roboticsprograms/frc/content.aspx?id=3570>.
- **Please do not remove any *FIRST* or Team number signs.** *This is stealing!* Signs are needed for multiple events.
- **Please do not bring food** into the arena.
- **Please do not sell any products.** This includes food, hats, shirts, or any promotional products.
- **Please do not give out any free food products**, such as candy, water, soft drinks, or fruit. You may trade team pins, however. *Stickers or Decals are NOT allowed to be distributed as they are often left behind in the venue.*
- **Please do not sell raffle tickets.**
- **Please do not use extremely noisy devices**, such as floor stompers, whistles, or air horns.
- **Please do not invite or bring live bands** to play in the audience. This dilutes the presentation on the playing field and is too confusing for the audience.
- **Do not play loud music in the Pit** because it interferes with important announcements. If a team is uncooperative, the power to the team's Pit Station will be shut off and/or the music confiscated.
- **Please do not save seats.** It is not fair to other teams or the public that we hope to interest as team sponsors & volunteers.
- **Please do not bring helium tanks.** *Helium Balloons are NOT allowed at the Arena!*
- **Please do not arrange for Internet access** on the site or attempt to connect to the Internet.
- **Please do not use walkie-talkies** as they interfere with the wireless radios used by event service providers as well as the regional staff.
- **Please do not form "tunnels"** during the Awards Ceremony.
- **Please do not run in the venue.**
- **Please do not wear open-toed or open-backed shoes in the Pits or on the playing field.** This includes "clog" and "mule" style shoes, such as Crocs.
- **Please ensure anyone in the pit area – including walkways – is wearing safety glasses.**

Finally, please respect the event staff as we are attempting to run a smooth event and keep everyone safe.

5.1.3 Seating in the Arena

Ample stadium style seating is available for teams with great views of the competition field. Please do not hang banners on any part of the bleachers or on the venue walls.

5.2 In Case of Emergency

In the event of an emergency at the Arena, make sure to listen to the instructions of the event staff, as it may be necessary to evacuate or clear a path for emergency personnel. We recommend setting up a team meeting place outside of the arena beforehand. A card with this location as well as your hotel and other important team contacts would be a great handout to remind your team!

5.3 Additional Activities at the Arena

Please visit the various tables & booths setup on the mezzanine level. Some of our sponsors will be showing off their technologies on Friday and Saturday, and local universities will be set up to provide information about their FIRST-related scholarships on Thursday.

5.4 The Pits

Teams will receive a pit map when they register at the arena on Thursday at the Pit Administration Center. Pits are 9x10 ft.

- Each team's pit station will have a table and power outlet. Each pit station will have an 18 amp fuse
- Due to safety and insurance regulations, teams cannot build any structure that supports people or items for storage above the work area in their pit space.
- No structures should be higher than 10 feet above the floor and must safely support any signs or displays mounted to the structure. *FIRST* will require the removal of any pit structure that is deemed unsafe by event management personnel and local committee members.

The Team Checklist in section 7.16 of the *FIRST* Robotics Competition Manual has a checklist of items to bring to your pit station.

As a special reminder, don't forget:

- A 25 ft heavy duty extension cord and a power strip
- A small cart to transport your heavy robot from the Pit to the playing field.
- Safety glasses for everyone on your team and your guests if they will be visiting the pits.

★ **NEW!** We will be piloting a "Scouting Area" this year. More details to follow closer to the event.

5.5 Wireless Internet and Power

- **Wireless:** We plan to provide wireless access at the arena for teams who need internet access during the event.
- **Power:** Teams **may not** string power cables around the arena. Outlets on the mezzanine level may be used for charging.

5.6 Machine Shop Information/Rules

NASA will be providing a mobile machine shop at the Boston competition. Below are the general rules and process for machine shop work requests:

- You must supply any material that is needed for repairs. The machine shop cannot provide scrap material.
- You may NOT take work requests to the machine shop yourself. All requests must go through Pit Administration.
- One team representative must initially accompany their request to the machine shop, but may leave after providing any needed explanations.
- You may not observe your job being worked due to safety and liability. If you like, you can wait for the part right outside the shop.
- All work requests are First Come First Serve, unless a reasonable exception can be made. The machine shop cannot guarantee timing for any ASAP requests.
- Once your job is complete, a pit announcement will be made. You may also check back with Pit Administration periodically.

5.7 Event Schedule

A final schedule will be provided at team check-in, but this is a guide as to what you can expect. Please note that in order to fit in at least ten matches per team, the matches will run later than in past years on Friday and Saturday.

5.7.1 Thursday

- 7:45 AM 3 Team Reps to uncrate
- 8:30 AM Pits and Machine Shop open
- 8:30 AM - 12:00 PM Registration and inspection
- 10:00 AM - 12:00 PM Practice Rounds
- 12:00 - 1:00 PM Lunch
- 1:00 - 4:30 PM Practice rounds
- 8:00 PM Pits and Machine Shop close

5.7.2 Friday

- 8:00 AM Pits and Machine Shop open
- 9:00 - 9:30 AM Opening ceremonies
- 9:30 AM - 12:00 PM Seeding matches
- 12:00 - 1:00 PM Lunch
- 1:00 - 5:00 PM Seeding matches
- 5:15 - 6:00 PM Awards ceremony
- 6:30 PM Pits and Machine Shop close

5.7.3 Saturday

- 8:00 AM Pits and machine shop open
- 9:00 - 9:30 AM Opening ceremonies
- 9:30 AM - 12:15 PM Seeding matches
- 12:15 - 12:30 PM Alliance Selections
- 12:30 - 1:30 PM Lunch
- 1:30 - 4:30 PM Final rounds
- 4:45 - 5:45 PM Awards ceremony
- 6:30 PM Pits close; crates packed

5.8 Team Social

The team social plans are currently TBD. Teams will be notified when arrangements have been made.

5.9 Meals and Accommodations

5.9.1 Breakfast and Lunch

The Agganis Arena concession stands offer a variety of menu items. There are also many coffee, pizza, and sandwich shops near the Arena. If you'd like to bring in water, you can use a Nalgene-like container or a thermos instead of bottled water. There are drinking fountains around the arena to refill these containers.

5.9.2 Hotels

There are many good hotel options in the Greater Boston area. Any of them can give you specific directions – driving, walking, or public transportation – to get to the Agganis Arena. Here are some suggestions of hotels that are close to the Arena and are offering special rates to FIRST teams:

- Boston FIRST has a **special rate** at the Courtyard by Marriott in Brookline. Call the hotel and request the Boston FIRST Robotics Competition rate.
- As with other regionals as well as the Championship, you can go through FIRST's official hotel reservation system, found at <http://www.firstchampionshiphousing.com/Regionals.aspx>

Event Contacts

You may need the following contacts regarding the event. If you are not sure who to contact, then please email Mikell Taylor and your question will be answered/or forwarded appropriately.

Mikell Taylor – *President, Boston FIRST Planning Committee*

mikell@bostonfirst.org

Steve Cremer – *Regional Director*

scremer@usfirst.org

5.10 Webcasting and Video Database System

With the help of The Blue Alliance, the Boston FIRST Regional is providing a interactive match archive that will allow teams to queue up video of any previous match as requested! More information will be provided at the event and at <http://www.thebluealliance.net>.

We highly recommend all teams bring at least one laptop computer, along with an Ethernet cable, in order to utilize this system.

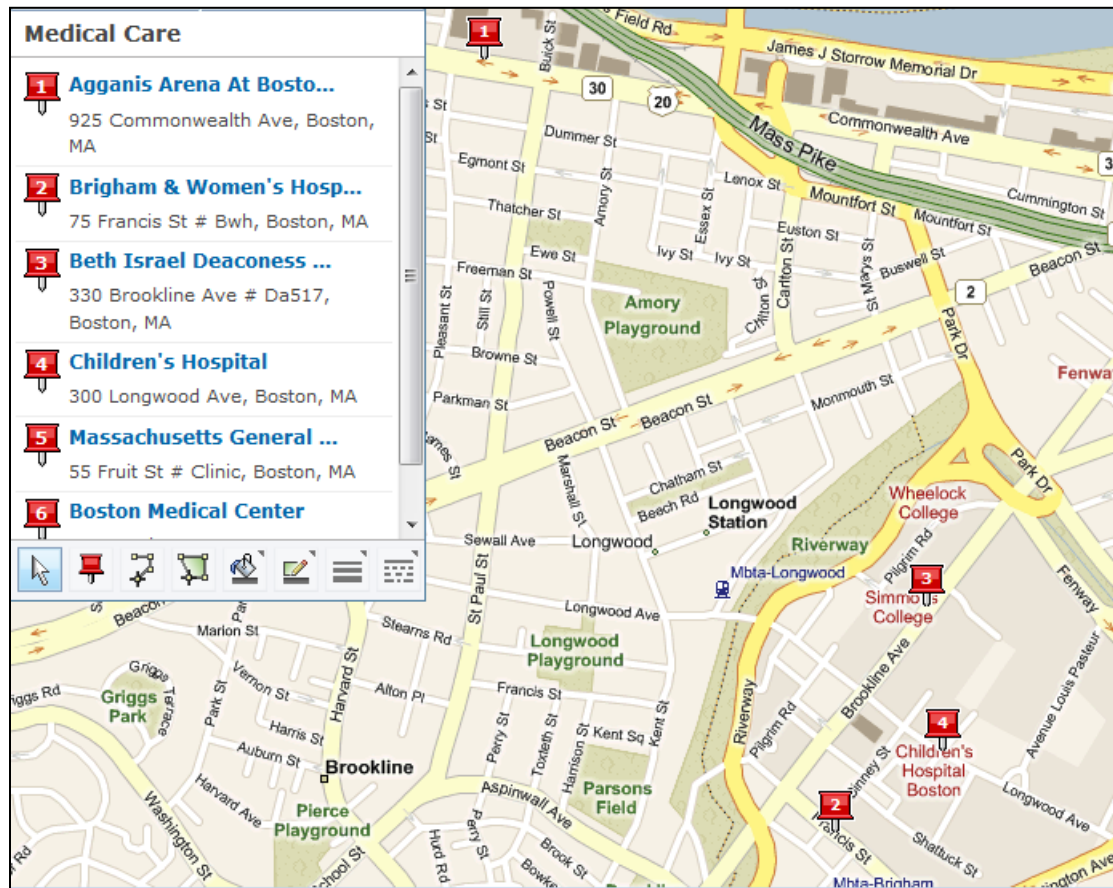
The event will also be webcast live. Please see the BostonFIRST website for details.

6 Emergency Information

If you need emergency medical assistance while in Massachusetts, dial “9-1-1”.

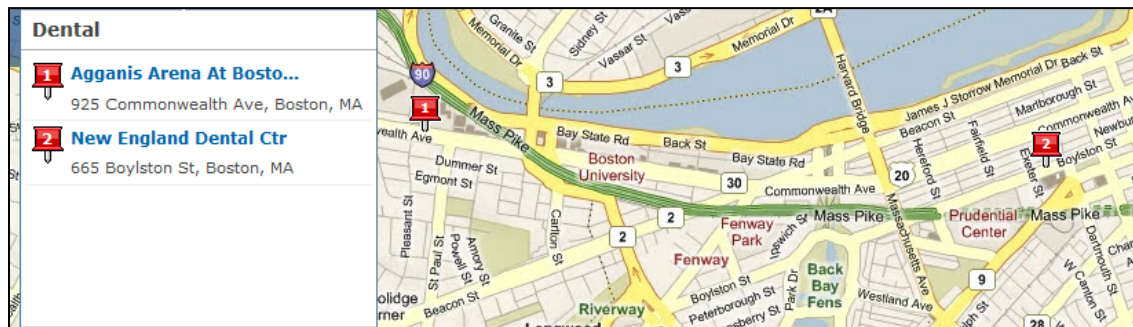
Please also notify event staff if possible so we can assist and notify any EMTs (Emergency Medical Technicians) who may be present at the arena already.

6.1 Area Hospitals



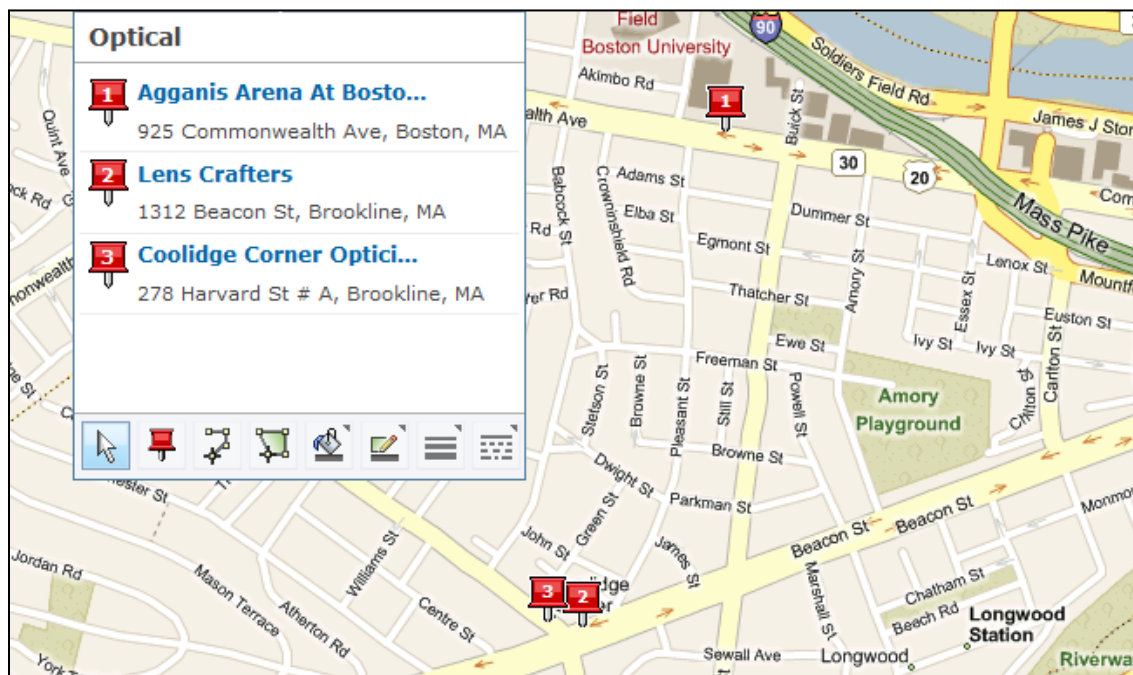
- **Brigham & Women's Hospital**, 75 Francis Street, Boston, MA 02115 · (617) 732-5500
- **Beth Israel Deaconess Medical Center**, 330 Brookline Ave., Boston, MA 02215 617-667-7000
- **St Elizabeth's Medical Center of Boston**, 736 Cambridge St, Brighton (617)789-2666
- **Children's Hospital**, 300 Longwood Ave, Boston, (617)355-6611
- **Mass General Hospital**, 55 Fruit Street, Boston (617)724-4110
- **Boston Medical Center**, 840 Harrison Avenue, Boston (617)414-4075

6.2 Dental



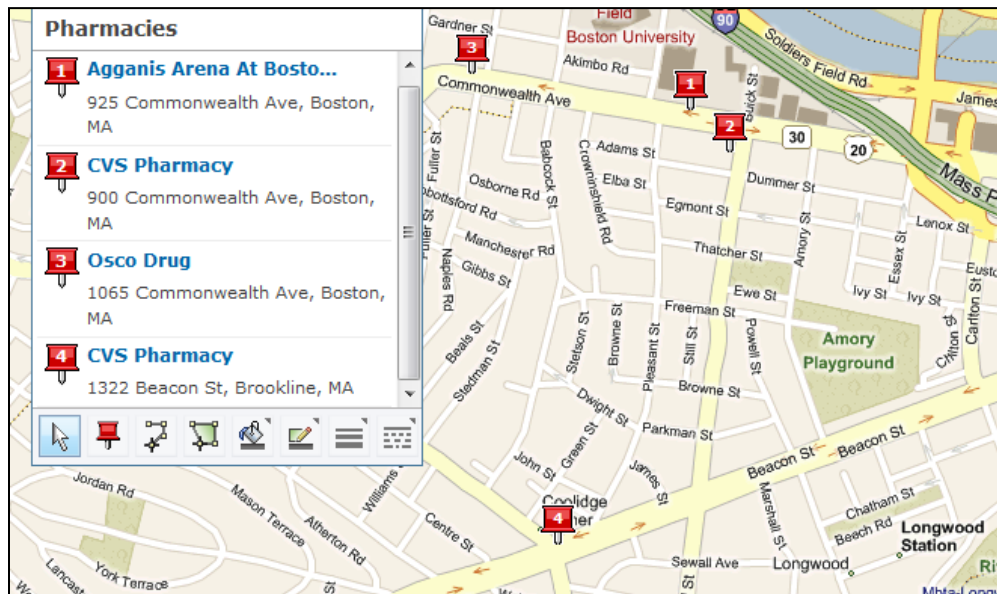
- **New England Dental Center** 665 Boylston St, Boston, MA 2.0 mi from arena – (617)266-2700

6.3 Optical



- **Lenscrafters** 1312 Beacon St, Brookline, MA 0.6 mi from Arena – (617)232-1379
- **Coolidge Corner Opticians** 278 Harvard St #A, Brookline, MA 0.6 mi from Arena – (617) 232-5080

6.4 Pharmacies



- **CVS Pharmacy**, 900 Commonwealth Ave .1 mi. from Arena (617)232-8130
- **Osco Drug**, 1065 Commonwealth Ave 1 mi. from Arena (617) 782-4585
- **CVS Pharmacy**, 1322 Beacon St, 1 mi. from Arena (617) 731-4410

7 Retail Resources near Agganis Arena

7.1 Office Supplies/Copies

- **Fedex Kinko's** Office and Print Center, 1370 Beacon St, Brookline (617)731-3100 0.7 mi from Arena
- **Staples** the Office Superstore, 214 Harvard Ave, Allston (617)566-8605 0.9 mi from Arena

7.2 Electronics/Computer Stores

- **RadioShack**, 730 Commonwealth Ave, Boston .5 mi., from Arena (617)734-5855
- **RadioShack**, 1334 Beacon St Brookline .7 mi. from Arena, (617)232-1519
- **Best Buy**, 401 Park Drive, Boston .9 mi. from Arena (617)424-7900
- **CompUSA**, 205 Market Street Brighton 1.6 mi. from Arena , (617)783-1900
- **MicroCenter**, 730 Memorial Drive Cambridge .4 mi from Arena (617)234-6419
- **Ritz Camera One Hour Photo** 1054 Beacon St, Brookline, MA 0.6 mi from Arena - (617)734-0540
- **Hunt's Photo & Video** 520 Commonwealth Ave, Boston, MA 1.2 mi from Arena - (617)778-2222

7.3 Hardware/Home Improvement Stores

- **The Home Depot**, 615 Arsenal Street, Watertown, 1.9 mi. from Arena, (617)926-0299
- **The Home Depot**, 75 Mystic Ave, Somerville, 3.2 mi. from Arena, (617) 623-0001
- **Aborn True Value Hardware**, (www.aborntruevalue.com) 438 Harvard St, Brookline, .6 mi. from Arena (617) 739-9000
- **Economy True Value Hardware**, (www.economyhardware.com) 144 Harvard Ave, Allston, .7 mi. from Arena, (617) 789-5552
- **Model Hardware**, 22 Harvard Ave, Allston, .8 mi. from Arena (617) 782-5131

8 What To Do If Your Team Has Some Spare Time

8.1 On the Boston University Campus

- **Barnes & Noble at Boston University Bookstore, 660 Beacon Street**
An unique five-level bookstore featuring books, magazines, electronics, prints, gifts, and a wide range of Boston University insignia gifts and sportswear.
The store offers a literary cafe featuring Starbucks coffee and other gourmet foods.
Open Mondays through Fridays, 9 a.m. to 9 p.m.; Saturdays, 10 a.m. to 6 p.m.; and Sundays, Noon to 6 p.m. (617)267-8484
- **Boston University Art Gallery, 855 Commonwealth Avenue**
The gallery is a showplace for many of the finest exhibitions of contemporary art in the region. It is located on the first floor of the College of Fine Arts and is open Tuesday-Friday, 10 a. m.-5 p. m.; Saturday-Sunday 1-5 p.m.
- **Daniel L. Marsh Chapel, 735 Commonwealth Avenue**
The physical and spiritual center of the Charles River Campus, this interdenominational chapel is open to all from 8 a. m. to 10 p. m. on weekdays and Sundays. In the Chapel Plaza stands the University's tribute to its distinguished alumnus, Dr. Martin Luther King, Jr.
- **George Sherman Union, 775 Commonwealth Avenue**
The University's student center. Facilities include the Union Court dining areas, games room, lounges, study areas, television viewing areas, a ballroom, student organization offices, administrative offices, meeting rooms, and a convenience store. In the basement is a branch of the United States Post Office.
- **Judson Boardman Coit Observatory, 725 Commonwealth Avenue**
The facility for the study of astronomy -- the "oldest of sciences" and the first science taught at the University. The observatory boasts a 6.-inch refractor, a 12-inch reflector, and a 14-inch and several 8-inch Schmidt-Cassegrain telescopes. The observatory is free and open to the public every Wednesday evening (weather and visibility permitting). Call (617)353-2630 after 5:30 p. m. for observing conditions.
- **Mugar Memorial Library, 771 Commonwealth Avenue**
The central research and study library of Boston University. The University's collection contains more than 2.1 million volumes in paper, 3.7 million volume equivalents in microform, and thousands of current journals.
- **Photonics Center, 8 St. Mary's Street**
From femtosecond spectroscopy and quantum optics to virtual reality, Boston University's \$80 million, 235,000 square-foot Photonics Center houses state-of-the-art laboratories devoted to developing new lightbased technologies for industrial and consumer products. The center is also home to a unique collection of light-based art. A self-guided tour of the center's art is available in the ninth-floor Photonics reception area.

8.2 Shopping Areas in and Around Boston

The following is a short list of shopping areas. There are many small to large shopping areas in neighborhoods around the Boston area.

- **Prudential Center** (indoor mall), 800 Boylston St (Back Bay Area),
<http://www.prudentialcenter.com> by car 1.8 mi from the arena. By Subway: Green Line Hynes ICA and Copley Sq stations; Orange line Back Bay station.

- **Newbury Street** (outdoor), Newbury St (Back Bay Area) <http://www.newbury-st.com/> by car 1.8 mi from the arena. By Subway: Green Line Hynes ICA and Copley Sq stations; Orange line Back Bay station.
- **Cambridgeside Galleria** (indoor mall), 100 Cambridgeside Pl, Cambridge (North Cambridge Area) <http://www.shopcambridgeside.com>, by car 2.5 mi from the arena .
By Subway: Green line to Lechmere Station. Parking Garage \$4 evenings and weekends.
- **Faneuil Hall Marketplace**, (indoor & outdoor mall) (Government Center Area of Downtown Boston) <http://www.faneuilhallmarketplace.com>, 3 mi. from the arena by car. By Subway – near Green Line (Gov’t Center), Orange Line (State St) and Blue Line (Aquarium)
- **Harvard Square**, (outdoor) Cambridge (Central Cambridge) 1.25 mi by car, by subway: Red Line, Harvard Square
- **Chestnut Hill Shopping Center**, Chestnut Hill (on Route 9 about 5 miles west by car) <http://www.simon.com/mall/default.aspx?ID=786>

8.3 Tourist Attractions

You can find more places worth visiting at the Greater Boston Convention and Visitor’s Bureau website: <http://www.bostonusa.com/visitor/visitor.php> and with their interactive mapping site <http://map.mapnetwork.com/destination/boston/cvb/> but here are some of our picks:

- **Boston Museum of Science, Planetarium and IMAX Theater** <http://www.mos.org/>
- **New England Aquarium and IMAX Theater**, near Faneuil Hall <http://www.neaq.org> (\$18-\$23)
- **USS Constitution**, Charlestown Navy Yard, oldest floating commissioned ship in US Navy, commissioned in 1797 - <http://www.ussconstitution.navy.mil> (free)
- **Freedom Trail** – 2.5 mi walking tour through historic Boston <http://www.thefreedomtrail.org>
Download a map at <http://www.iboston.org/pap/freedom.htm>
- **Museum of Fine Arts** 465 Huntington Ave. <http://www.mfa.org> – adults \$15, under 18 \$6.5 (discounts available for groups) by subway – take Green Line E train to MFA Stop or Orange Line to Ruggles Stop
- **Old Town Trolley** – 2 hr narrated bus tour (\$23-\$29) with all day unlimited re-boarding <http://www.historictours.com/boston>
- **Boston Duck Tours** – 80 minute narrated amphibian vehicle tour. About \$25. Boarding at the Museum of Science and the Prudential Center. <http://www.bostonducktours.com/>
- **MIT Museum** – Exhibitions into the research and innovations at MIT - \$7.50 for adults. <http://web.mit.edu/museum>.
- **5W!TS TOMB** - 45 minute Pharaoh’s tomb-themed interactive “haunted house”. \$20 <http://www.5-wits.com>

8.4 Movie Theatres

- **AMC Fenway Theatres**, 401 Park Drive (near Brookline Ave) (617)424-6266 (Major modern theater)
- **AMC Boston Common**, 175 Tremont St, (617) 423-3499 (Major modern theater) Located next to Green Line Boylston station.
- **Coolidge Corner Theatre**, Brookline, corner of Harvard and Beacon streets (http://www.coolidge.org/c_loc.html), (617)734-2500. (Local independent theatre)
- **AMC Chestnut Hill Cinemas**, 27 Boylston St, Chestnut Hill (5 miles from Newton Holiday Inn) (617)277-2500

8.5 Boston Area Colleges and Universities

Boston is home to many colleges and universities and many are accessible by public transportation. Directions and campus maps can be found on the college websites.

- **Boston College** - <http://www.bc.edu>
- **Boston University** - <http://www.bu.edu>
- **Harvard University** - <http://www.harvard.edu>
- **MIT** - <http://www.mit.edu>
- **Northeastern University** - <http://www.northeastern.edu>
- **Olin College of Engineering** – <http://www.olin.edu>

8.6 Other Massachusetts Tourist Resources

Visit these websites to get more information about visiting Massachusetts:

- **Boston Convention and Visitor's Bureau** - <http://www.bostonusa.com>
- **Massachusetts Office of Travel and Tourism** - <http://www.mass-vacation.com>
- **World Guide to Boston** - <http://www.boston.world-guides.com/>
- **Boston on a Budget** - <http://boston.citysearch.com/roundup/40237/>
- **Boston.Com Visitor's Guide** - <http://www.boston.com/travel/boston/>
- **Boston Online for Visitors** - <http://www.boston-online.com/visitors/index.html>

9 Any questions?

We've made every effort to make sure that this guide is as thorough as possible but if you have any questions, there are two ways to contact us:

- Email us at **ask@bostonfirst.org**.
- The Regional Competitions Forum at Chief Delphi